

DICE Installation for the E46 '00-'06 Sedan

Important! Please Read the Following Regarding the Integration of the Dice Module into your BMW.

IF THE BELOW STEPS AND SUBSEQUENT PROGRAMMING ARE NOT PERFORMED EXACTLY AS OUTLINED, YOUR DICE KIT WILL NOT FUNCTION PROPERLY.

- ***If you experience the Dice Module not operating correctly upon the initial installation, head to the trunk and unplug the 3 pin connector for approximately 1 minute. This will resolve 99% of all issues that may have arisen. Plug the connector back in and reattempt the initialization process.***

Before you begin the installation process, it is IMPERATIVE that you read and understand the following information.

- The Dice module is a very complex piece of hardware that is responsible for very complicated communications between your iPod and your BMW. It will not just “work” once you plug it in. Much like a computer, it has to be precisely programmed in order to communicate with existing components in your BMW.
- Your iPod **MUST** be updated with the very latest firmware from Apple. This software is available through the iTunes website. Before you attempt to install your Dice Module, make **SURE** that your iPod has the latest firmware installed.
- Also, it is **IMPERATIVE** that your iPod has a complete charge before you attempt to use it for the first time with your Dice module.

- Again, much like your computer, the Dice module requires a thorough initial programming sequence, as well as a great amount of **PATIENCE** during this initialization. Please perform these initial programming steps carefully and methodically.
- **We recommend a dry run, meaning before you route the cable from the front to the rear of the car, test the Dice kit in the trunk. Follow all instructions regarding the wiring, and give it a go before you get too involved.**
- ***If you experience the Dice Module not operating correctly upon the initial installation, head to the trunk and unplug the 3 pin connector for approximately 1 minute. This will resolve 99% of all issues that may have arisen. Plug the connector back in and reattempt the initialization process.***

Tools Required:

- Panel Removal Tool
- Philips Head Screwdriver
- **Brain**

The Process: **Disconnect your Negative Battery Terminal First!**

1. Begin by removing all items from the trunk of the vehicle. Make sure that all tail lights are in working order. If not, now is a good time to replace them. Also remove the carpet that covers the floor of the trunk, as it will reveal several fasteners that will need removing.
2. Start by removing the taillight covers. Turn the knob on each taillight counter clock-wise until the cover becomes loose (Figure 1).

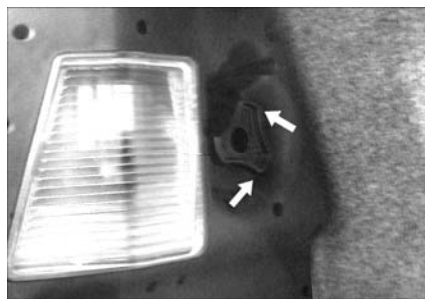


Figure 1

3. Now, look to the floor of the trunk. You will see that the two plastic casings on either side of the trunk are secured by plastic screws on the passenger side and fasteners on the drivers' side (Figures 2 & 3). Remove the fasteners using your panel removal tool as

shown (Figure 2). The plastic screws on the passenger side can be removed using a flat head screwdriver.



Figure 2



Figure 3

4. Remove these panels and place them aside. Keep all of the fasteners here so as not to lose them.
5. Now, look to the carpeted drivers' side of the trunk, and you will see two fasteners securing the side panel (Figure 4). Remove these using your panel removal tool.

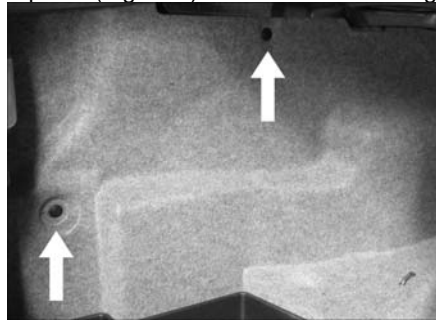


Figure 4

6. **If your vehicle has fold down seats, skip to step number 9.**
7. **DO NOT** Remove the two fasteners on either side of the rear of the carpeted panels where the three panels seemingly come together. (Figures 5 & 6) You will need to remove the large, circular plastic insert in the center of the rear of the trunk however.

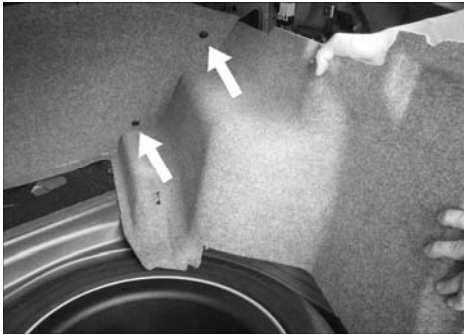


Figure 5

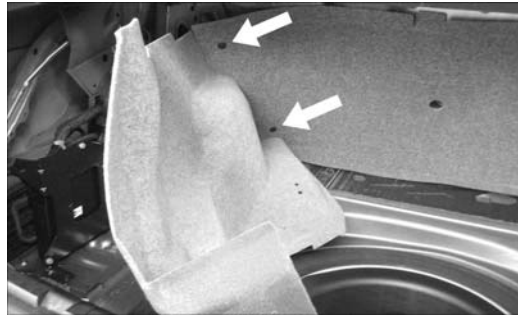


Figure 6

8. Notice the green manual gas tank release on the passenger side. Disconnect this as shown (Figure 7).



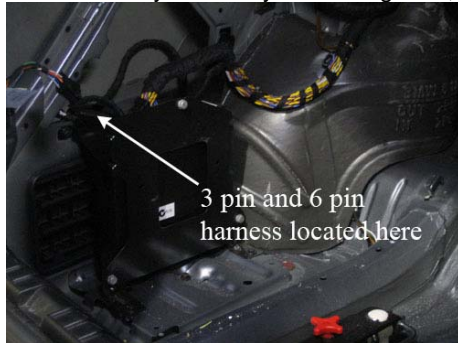
Figure 7

9. You can now start removing the entire trunk lining from the drivers' side. Just be patient, and it will come right out. Your trunk should look like this with the paneling removed (Figure 8). The factory amplifier is the black box in figure 8, and is where we'll locate our connections.



Figure 8 Vehicle w/out fold down seats shown

10. Here's the cable harness we'll be looking for. If your car has a CD changer, these wires will be plugged into the changer. You'll just unplug the changer and those will be the wires we'll plug into the Dice cables. There will be a 3 pin and a 6 pin plug in this harness. They are always found together, typically behind the factory amplifier in a cloth bundle.



11. At this point, we'll go ahead and plug in the 6 pin connector **ONLY**. **DO NOT PLUG** the 3 pin connector at this time! That will be the very **LAST** thing that you'll do upon completing every other step of the installation.
12. In regards to the 3 pin connector, it is **IMPERATIVE** that the brown wire on the BMW side of the pin be on the outside, and not the middle. See the photo below. If your plug does not look like this, you have found the wrong plug.



13. **Now, we need to get the cable from the trunk to the cabin. If your vehicle has fold down seats, it's pretty easy to snake the cable down into the backseat area. If your vehicle DOES NOT HAVE fold down seats, we'll need to remove the entire backseat.** It's easy, don't worry.
14. Let's now go ahead and pop out the bottom portion of the backseat. To do this, simply lift the front portion of seat upward, and the entire seat will free itself. Remove it from the car.



I know it's a 7 Series, but the same procedure holds for the 3 Series.

15. We now need to remove **the back portion of the seat**. It's easy. Simply pop out the top portion of the seat by pulling firmly on the top section from both sides (passenger and driver) of the seat. Wedge your hands down behind the tops of the seat, and firmly pull outward. Once free, the seat simply lifts upward and out of the car.
16. Now, we need to the cable into the cabin. Use the grommet located on the back wall on the driver's side:



17. You'll now proceed to routing the cable alongside the door sill down the passenger side of the vehicle. You can simply tuck the cable underneath the plastic sill all the way underside



Tuck the Dice cable underneath the door sill where it meets the carpet.

18. Bring the Dice cable up underneath the kick panel sill and into the passenger footwell.



19. As the cable comes up towards the glove box, you'll want to begin thinking about where you'll mount the Dice module. We like to mount it behind the glove box. It's easy to remove. Open the glove box and you'll see the 5 screws that need to be removed.



20. There is still one more screw on the underside of the glove box that we'll need to remove.



21. Now, with the glove box open, carefully lift it outward by pulling slightly upward and then toward you. It's easy, stop worrying! Here's what you'll see, and we'll house the Dice module in any one of the little slots back there.



22. Go ahead and plug the cable from the trunk into the Dice Module, and then you can plug the cable going out to the iPod or spec.dock into the Dice Module. If you're going to keep the iPod in the glove box, just snake the wire back into the glove box as you're reinstalling the glove box.



23. **At this time**, you can head back into the trunk and plug in the 3 pin connector at the junction of the BMW cables and the Dice cable.
Make sure that the 3 pin connector on the BMW side of the harness has the brown wire on the outside of the connector. If the brown wire is in the center pin on the 3 connector, you have found the phone connector. DO NOT USE THIS CONNECTOR.

Programming the Dice Module

Now we can begin the programming, which is super easy if you follow these steps:

- In some 1999 - 2002 E46 3 Series models, especially models with Cassette Players, we have seen that once you go into Dice mode, the head-unit's controls become locked up due to the Dice's scrolling text.

Resolution: Flip the Car Configuration Switch #1 (far left switch) into the down, or "on", position. This slows text output and should unlock head-unit controls.

If this doesn't resolve the issue, then try going into simple mode and disabling all text (Disc 6, Track 99).

- We have also seen in some instances where the Satellite Radio (Sirius or XM) is no longer detected after the Dice module is connected. This situation is also caused by Dice's text scrolling locking up the head-unit.

Resolution: There are two possible resolutions to this issue: 1. On the Dice module itself, switch the car configuration dipswitch #1 into the down, or "on" position. 2. Insert a CD into the Business CD player. In doing this, your radio is given enough time to catch up to the commands without the text data interfering.

1. Turn the ignition on and **wait approximately 45 seconds before** beginning to use the Dice module. This is **VERY** important. **Do not** attempt to use the iPod during this time.
2. On your head unit, press the CD button twice until you see the Dice module appear on the screen. It will usually say "CD 01-01" at first, or "INIT" for initializing.
3. If your 3 Series is a late '00 model or newer, your radio is capable of supporting the text information from your iPod. To enable text, simply press button #6 on your radio and **wait approximately 45 seconds**.

4. The radio will automatically advance to track #1, which is where we want it to be. Once text appears, press button #1 on your radio. However, **If your 3 Series has navigation, advance the radio to track 6, and once text appears, press button #1.** This will allow the Dice to sync with the BMW system.
5. **If your Dice module seems to be acting up at this point, as in the text functions aren't working properly or you are unable to activate the text, head back to the trunk and UNPLUG the 3 pin connector for approximately 1 minute. This will reset the iPod. Plug it back in and start over at step 1.**
6. Again, **before** you attempt to control the iPod, **give it a few seconds** to sync up with the communication system in your BMW.

Using your DICE module in your BMW:

When changing tracks on your iPod using your steering wheel controls or radio controls, **do NOT press the button in rapid succession in an attempt to change songs faster.**

This will cause communication issues with the DICE module. Rather, press **the buttons one at a time**, to allow the radio and the iPod to change songs at the same time.

If you want to rapidly change tracks, do so directly through the iPod controls.

Troubleshooting Guide:

If your Dice module begins acting up in **any** way, there are a few simple procedures that will most likely solve any issues that you may be having.

If you experience the Dice Module not operating correctly upon the initial installation, head to the trunk and unplug the 3 pin connector for approximately 1 minute.

This will resolve 99% of all issues that may have arisen. Plug the connector back in and reattempt the initialization process.

1. First and foremost, it is **imperative** that your iPod is up to date with the most current firmware. This firmware is available at the iTunes website. This solves most problems with the Dice modules.
2. Check to make sure that your iPod battery has enough of an initial charge to function properly. This is a very common reason we see the Dice modules not working as they should. If not, the iPod periodically needs to be charged via the AC adapter that came with it. USB charging will not work on an iPod that has completely lost it's charge.
3. Reset both the iPod and the Dice module.

To reset the iPod, you will simultaneously hold down the center button and the menu button for approximately 10 seconds until you see an apple appear on the screen of the iPod.

To reset the Dice module, you will want to completely disconnect the module itself, meaning both the cable coming from the trunk and the cable going to the iPod. At this point, it is



imperative to leave the module disconnected **for at least half an hour.**

Now, plug the Ipod cable back into the Dice module, then plug the cable coming from the trunk back into the Dice module. Refer to the section above for the proper initialization programming sequence.